

CAPABILITY STATEMENT

2025





ABOUT METROCON

Metrocon is a premier building contractor with a reputation for delivering a seamless end-to-end building service for clients across WA.

For over two decades, Metrocon has been a trusted leader in Perth's construction industry, specialising in best-in-class new builds and major refurbishments within live operating environments.

With a track record of over 100 completed projects for clients across Western Australia and close to \$200 million in revenue, a significant portion of our portfolio comes from repeat clients and referrals across various sectors.

From smaller works like office fit-outs to complex large-scale projects such as schools and mixed use developments, our team is known to consistently deliver optimal building outcomes in all sectors up to \$50 million.

Our expert team brings extensive experience across the entire project lifecycle, allowing for flexible engagement through a variety of delivery models, including early contractor involvement, construct only, design and construct, and construction management.

Whether engaged from the earliest planning stages or much later in the process, we provide a clear and transparent construction plan with a fixed price and defined delivery timeframe. From the moment work begins, we hold ourselves accountable to these commitments, keeping you informed and engaged every step of the way.

OUR CAPABILITIES

CONSTRUCT ONLY

With design completed prior to engagement, our team quickly moves to understand and embrace your vision for the project, establishing clear cost and delivery timeframes before construction commences.

DESIGN & CONSTRUCT

Decisions made during concept and design stages can have the most substantial impact on a project's success. With full responsibility for project delivery, we can integrate design buildability, scheduling, and procurement considerations into our construction solution.

CONSTRUCTION MANAGEMENT

We provide comprehensive oversight and strategic direction from project inception to completion. Working collaboratively with clients and their design teams, we oversee trades, optimise construction methodologies, and ensure adherence to stringent quality and safety standards.

EARLY CONTRACTOR INVOLVEMENT

We are involved from the earliest stage, allowing for greater certainty and control over project cost, risk, and timelines. We can better anticipate constraints such as procurement lead times to ensure a smoother and earlier transition from design to construction than with other delivery methods.

REFURBISHMENT & FITOUT

Whether we're building new commercial fitouts or revitalising existing properties, we understand what it takes to deliver modern, functional interior spaces while operating within challenging live environments.



OUR SECTORS



EDUCATION



MULTI-RESIDENTIAL



COMMUNITY



RETAIL & HOSPITALITY



COMMERCIAL & INDUSTRIAL



RETIREMENT & AGED CARE



FEATURED PROJECTS

AUSTRALIAN ISLAMIC COLLEGE, FORRESTDALE

STAGE 2 - NEW TWO-STOREY HIGH SCHOOL WITH ADMIN, SPECIALTY
BUILDINGS, AND SINGLE-STORY CANTEEN

TYPE

Construct only

VALUE

\$31M

CLIENT

Australian Islamic College Perth

LOCATION

Forrestdale

COMPLETED

Ongoing

ARCHITECT

Marocchi Engineering Group



AUSTRALIAN ISLAMIC COLLEGE, FORRESTDALE

STAGE 1 - NEW HIGH SCHOOL CONSISTING OF A KINDERGARTEN, PRE-PRIMARY, PRIMARY, MAINTENANCE SHED, & ASSOCIATED INFRASTRUCTURE

SECTOR	VALUE	CLIENT
Education	\$19M	Australian Islamic College Perth
TYPE	COMPLETED	ARCHITECT
Construct only	2024	Marocchi Engineering Group



“The project was completed on time, demonstrating Metrocon’s commitment to punctuality and efficiency. Throughout the entire process, their team maintained excellent communication, keeping us informed at every stage. Their cooperation and willingness to address any concerns we had were truly commendable.”

Abdullah Khan
Executive Principal & CEO





WESTWOOD NEDLANDS

MIXED-USE MID-RISE, SEVEN STOREYS, 17 APARTMENTS WITH
COMMERCIAL & SHARED SPACES ON GROUND FLOOR

SECTOR

Multi-residential

VALUE

\$16.2M

CLIENT

Griffin Group

TYPE

ECI & Construction management

COMPLETED

Ongoing

ARCHITECT

Maarch Architects



NOUVEAU NEDLANDS

MIXED-USE MID-RISE, SEVEN STOREYS, 17 APARTMENTS WITH
COMMERCIAL & SHARED SPACES ON GROUND FLOOR

SECTOR

Multi-residential

VALUE

\$15.5M

CLIENT

Griffin Group

TYPE

Construction management

COMPLETED

Ongoing

ARCHITECT

Maarch Architects



MONUMENT EAST

STAGE 1 - 23 MODERN TOWNHOUSES

SECTOR	VALUE	CLIENT
Multi-residential	\$11M	Locus Property
TYPE	COMPLETED	ARCHITECT
Design and construct	Ongoing	Metrocon



LA SALLE CATHOLIC COLLEGE

NEW BOARDING FACILITY

SECTOR

Education

VALUE

\$10M

CLIENT

CEWA

TYPE

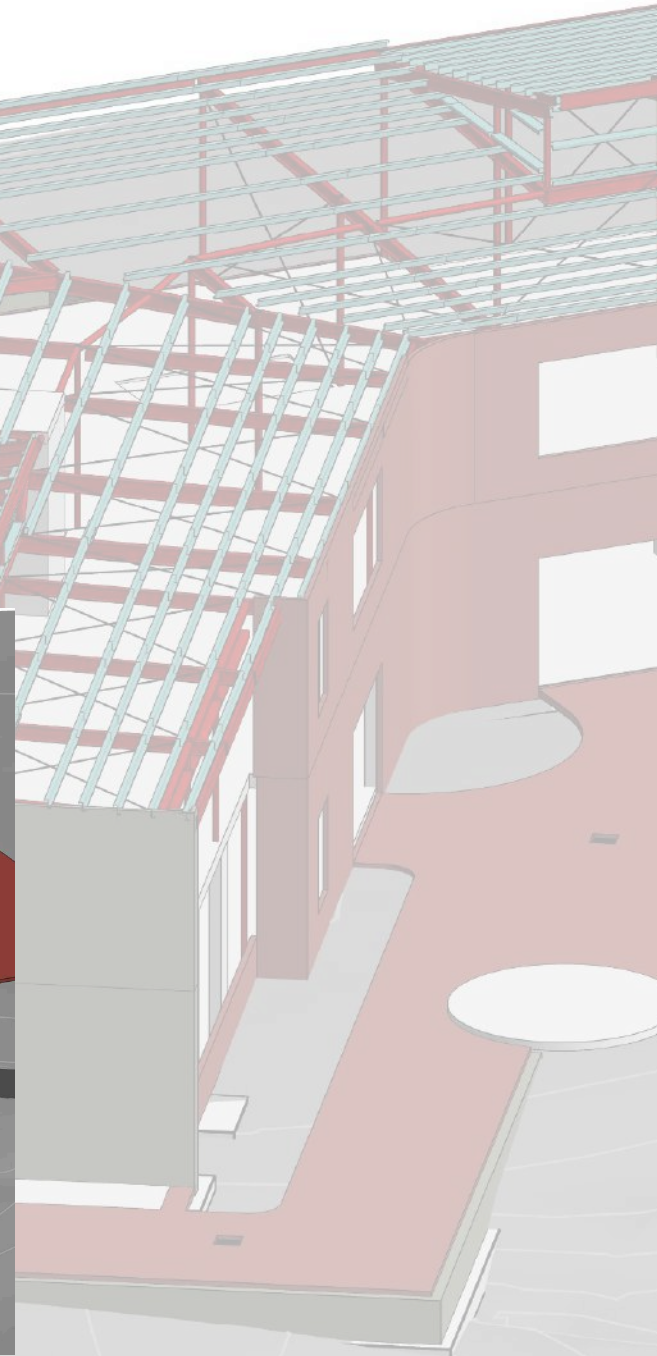
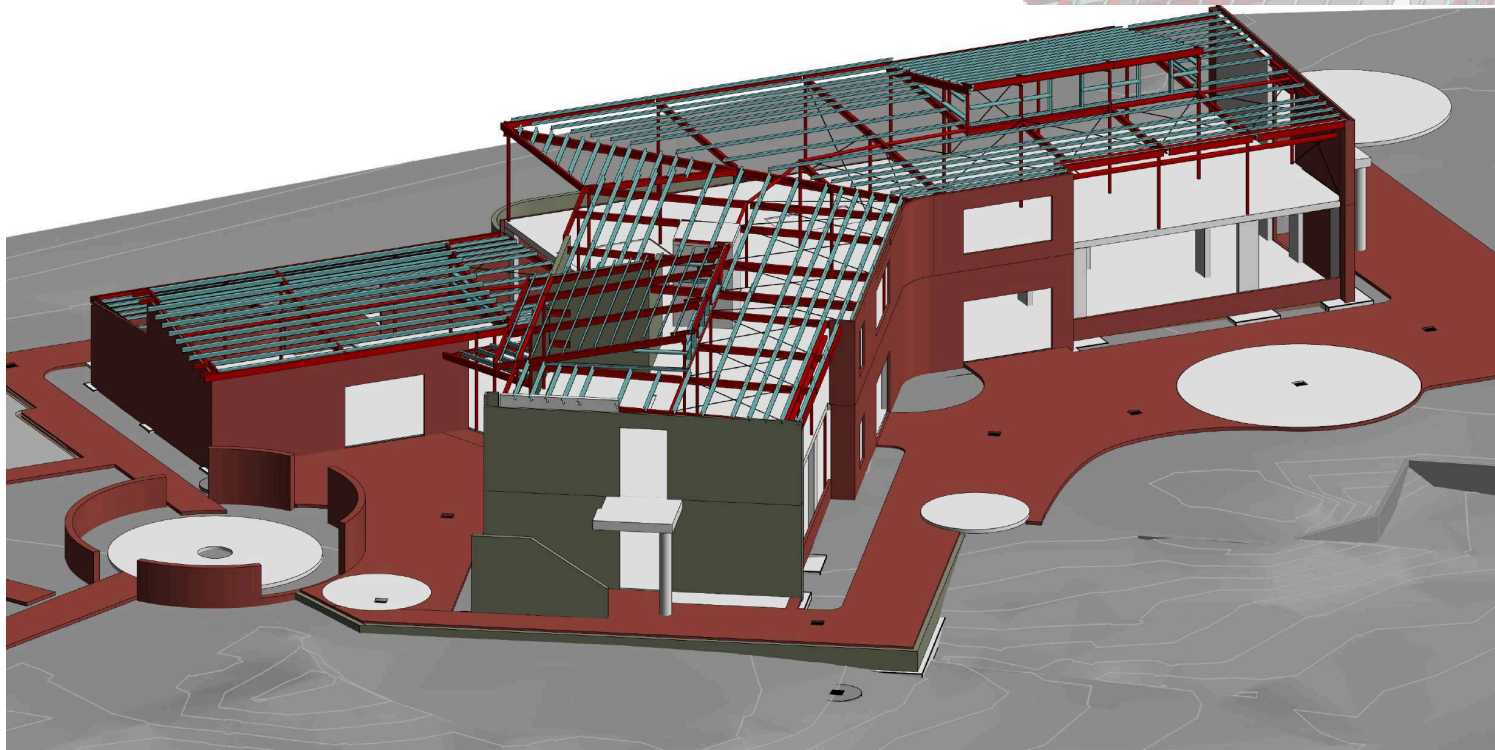
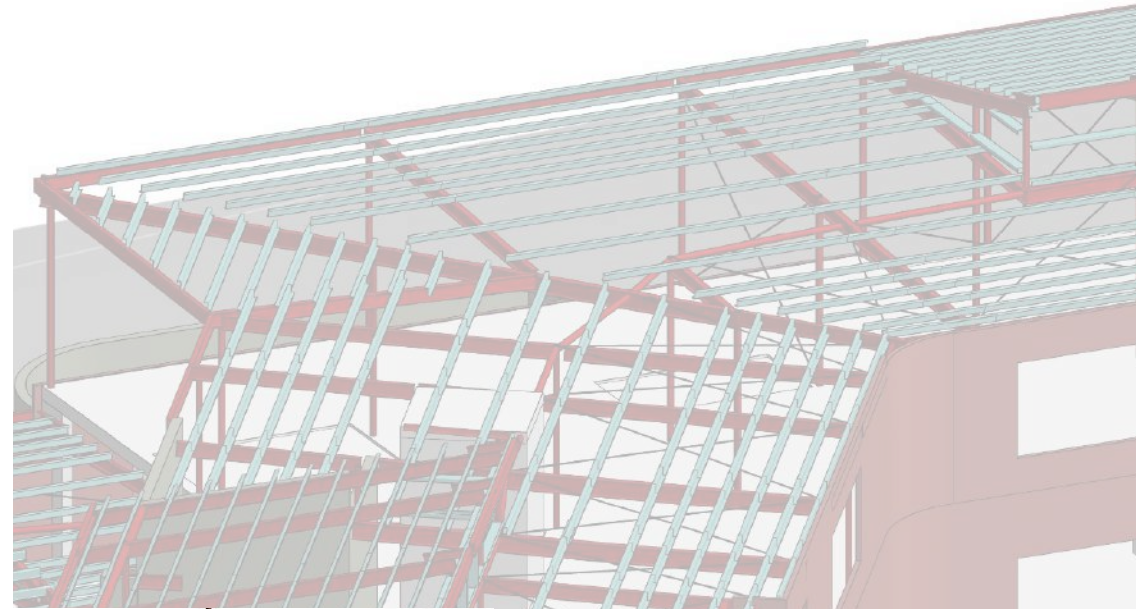
Construct only

COMPLETED

Ongoing

ARCHITECT

Munns, Sly & Moore



PARK LANE TOWNHOUSES

22 TWO-STOREY TOWNHOUSES

SECTOR

Multi-residential

VALUE

\$9.3M

CLIENT

Locus Property

TYPE

Design & construct

COMPLETED

Ongoing

ARCHITECT

Metrocon



ST JAMES ANGLICAN SCHOOL

STAGE 1 - NEW PRIMARY SCHOOL CONSISTING OF KINDERGARTEN, PRE-PRIMARY, PRIMARY, AND ASSOCIATED INFRASTRUCTURE

SECTOR	VALUE	CLIENT
Education	\$7.2M	Anglican Schools Commission
TYPE	COMPLETED	ARCHITECT
Design & construct	2016	DWA Architects





SUKHA RESIDENCES

SIX LUXURY TWO-STOREY TOWNHOUSES

SECTOR

Multi-residential

VALUE

\$6M

CLIENT

Griffin Group

TYPE

Construction management

COMPLETED

Ongoing

ARCHITECT

Fine Lines



IRENE MCCORMACK CATHOLIC COLLEGE

NEW LIBRARY BUILDING & REFURBISHMENT OF EXISTING HOME-
ECONOMICS CLASSROOMS, IT ROOMS, & SCIENCE LAB

SECTOR

Education

VALUE

\$5.9M

CLIENT

CEWA

TYPE

Construct only

COMPLETED

2008

ARCHITECT

Parry & Rosenthal Architects





ST JOHN PAUL II PARISH

NEW CHAPEL AT ST JOHN PAUL II CATHOLIC PRIMARY SCHOOL

SECTOR

Community

VALUE

\$5.5M

CLIENT

Catholic Archdiocese of Perth

TYPE

Construct only

COMPLETED

2023

ARCHITECT

DWA Architects





18 COOPER STREET TOWNHOUSES

5 LUXURY TOWNHOUSES

SECTOR

Multi-residential

VALUE

\$5.4M

CLIENT

Maars Developments

TYPE

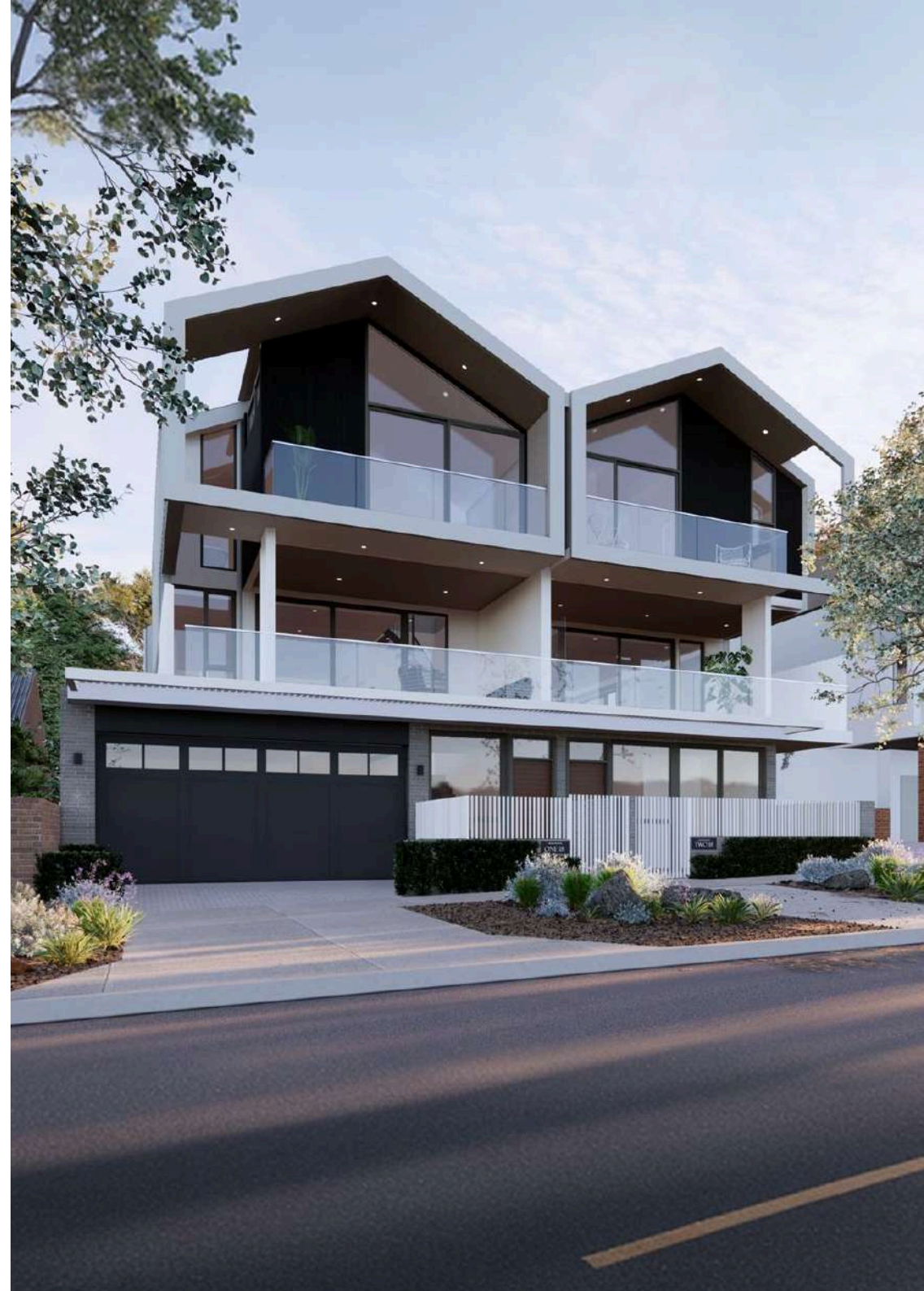
Construct only

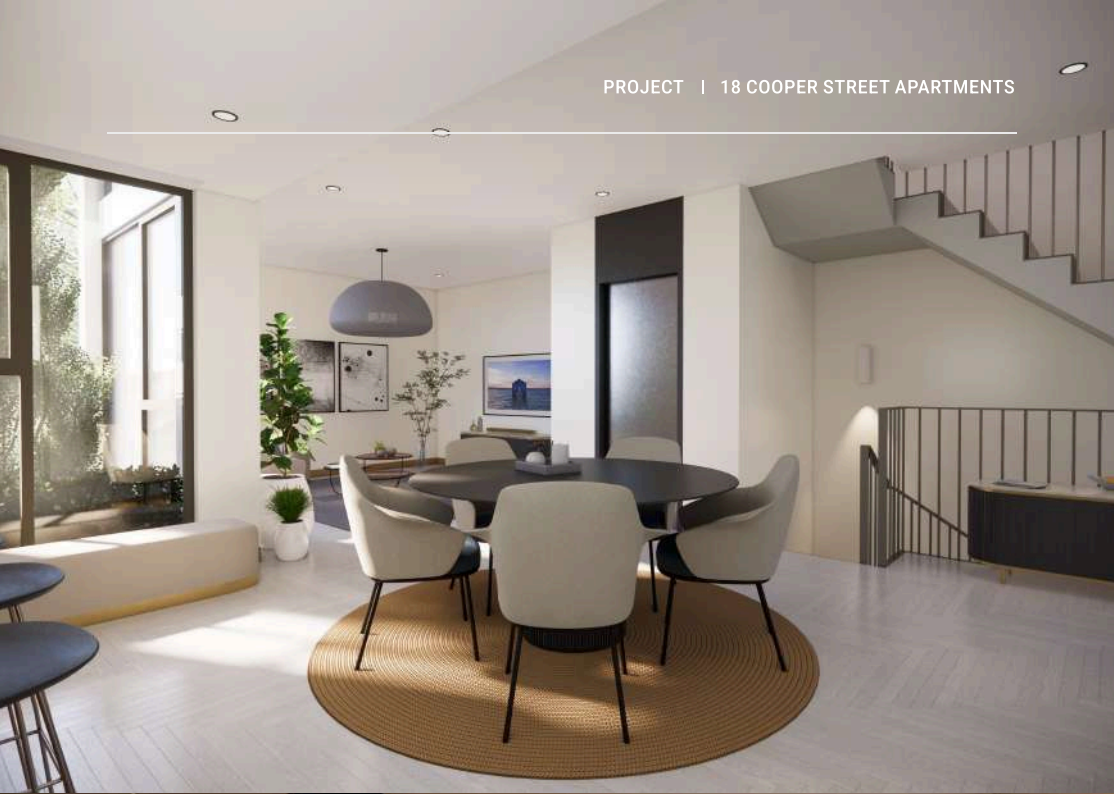
COMPLETED

Ongoing

ARCHITECT

Maarch





FOUNTAIN COLLEGE

STAGE 3 - NEW PRIMARY SCHOOL CONSISTING OF 6 CLASSROOMS,
A LIBRARY, IT LAB, STAFFROOM, AND FOUR ADMIN OFFICES

SECTOR

Education

VALUE

\$5.4M

CLIENT

Fountain College

TYPE

Construct only

COMPLETED

2025

ARCHITECT

DWA Architects





20 COOPER STREET APARTMENTS

10 LUXURY APARTMENTS

SECTOR

Multi-residential

VALUE

\$4.5M

CLIENT

Maars Developments

TYPE

Construction management

COMPLETED

Ongoing

ARCHITECT

Maarch





ARANMORE CATHOLIC COLLEGE

STAGE 7A & 7B - REFURBISHMENT OF HISTORICAL BUILDING

SECTOR

Education

VALUE

\$4.5M

CLIENT

CEWA

TYPE

Refurbishment & fitout

COMPLETED

2021

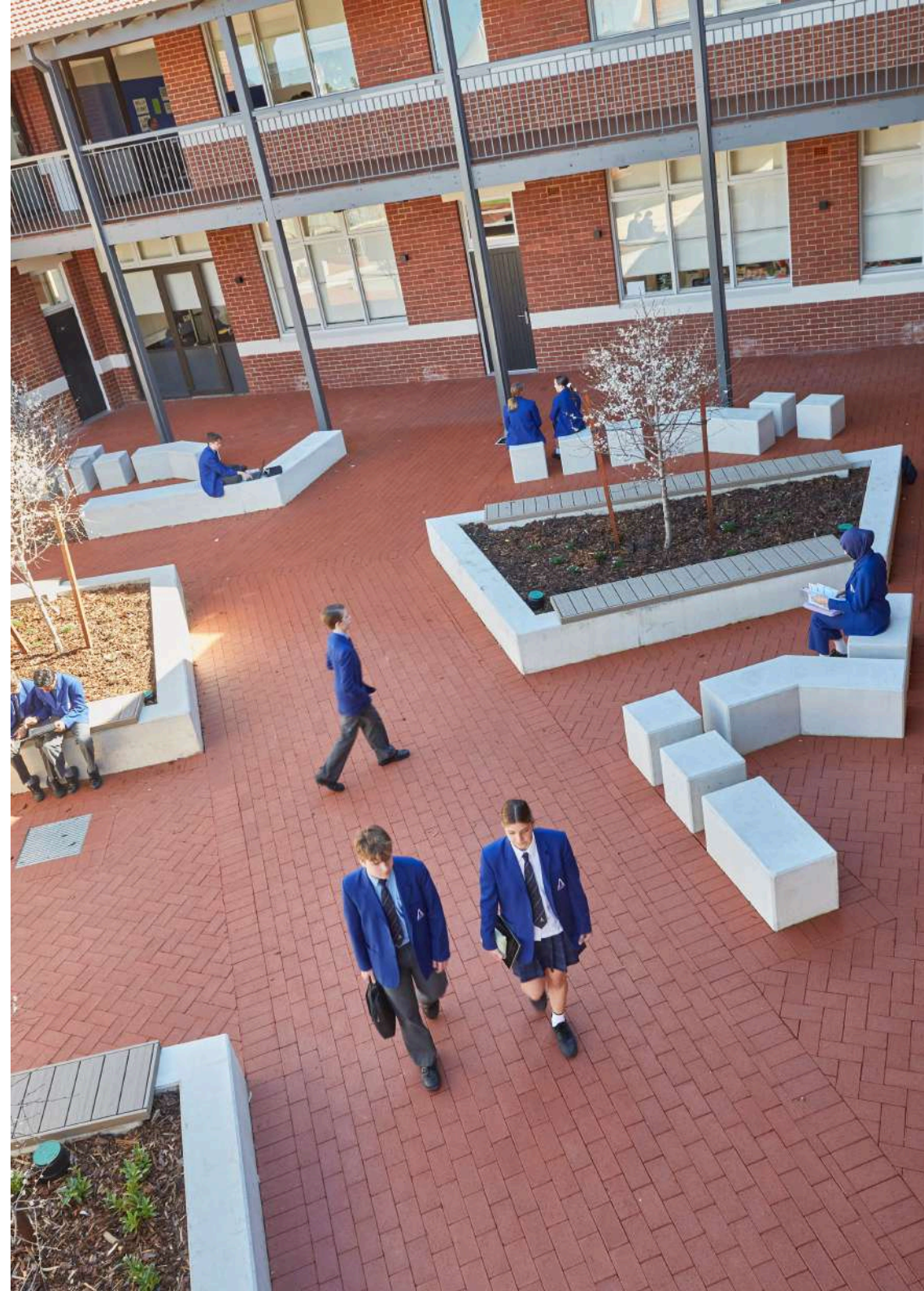
ARCHITECT

TRCB



“From the beginning to the end of the project, Metrocon were organised, reliable and easy to deal with. They worked well with our architects to ensure any design modifications were implemented seamlessly into the project and willingly worked around college requirements, especially exam periods and requests for quieter working.”

Julie Hawes
Business Manager





ST PETER'S EARLY LEARNING CENTER

STAGE 9 - NEW EARLY LEARNING CENTRE & PLAYGROUND

SECTOR	VALUE	CLIENT
Education	\$4.2M	CEWA
TYPE	COMPLETED	ARCHITECT
Construct only	2024	EIW



Metrocon demonstrated a commendable commitment to delivering a high-quality project within budget, ensuring the school's needs were always front and centre. Their team was professional and accommodating, responding flexibly when handling various changes requested by the school along the way. ”

Chloe Summers
EIW Architects





CHAPEL OF ST JAMES

NEW CHAPEL AT ST JAMES' ANGLICAN SCHOOL

SECTOR

Community

VALUE

\$3M

CLIENT

Anglican Schools Commission

TYPE

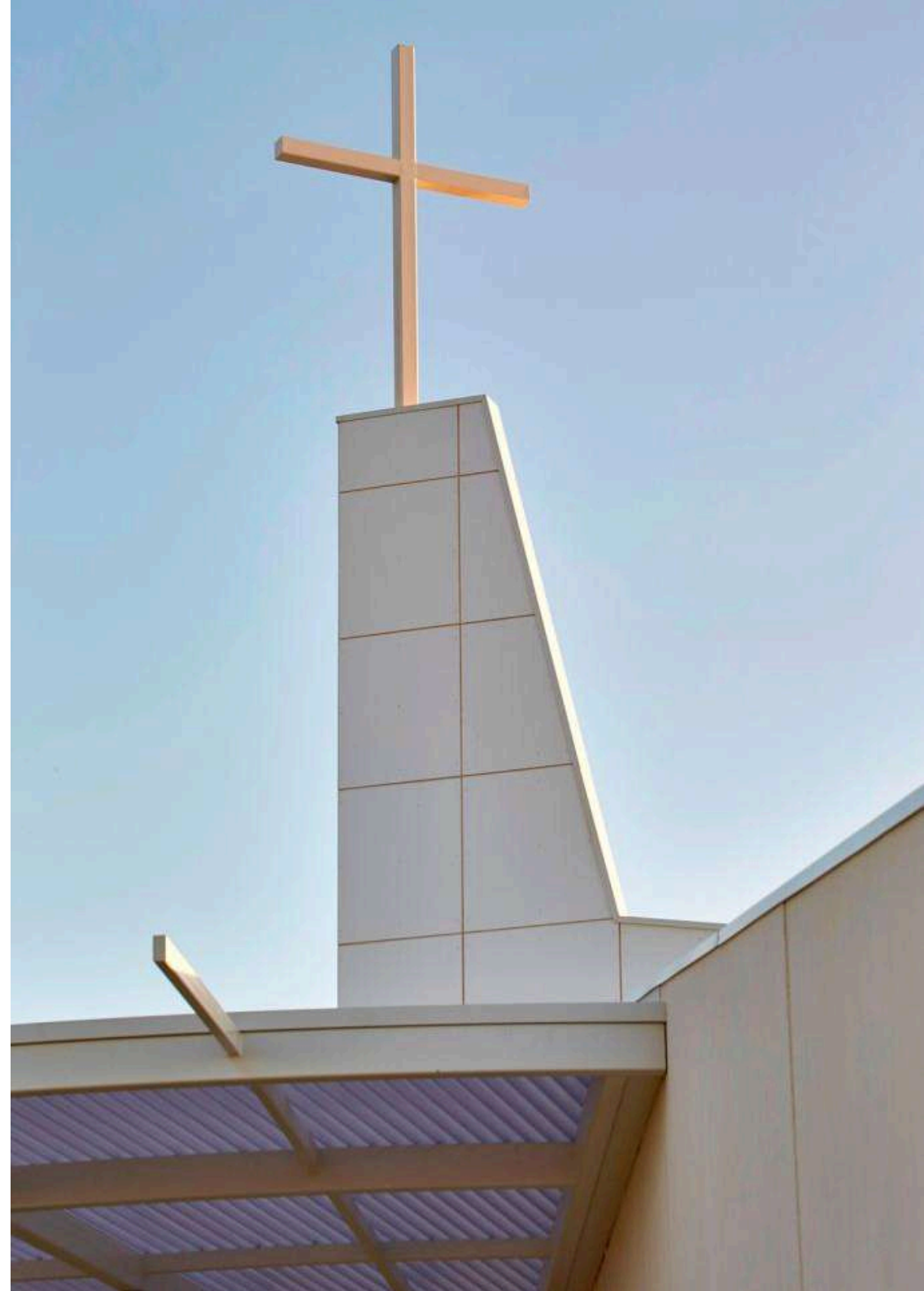
Construct only

COMPLETED

2015

ARCHITECT

DWA Architects

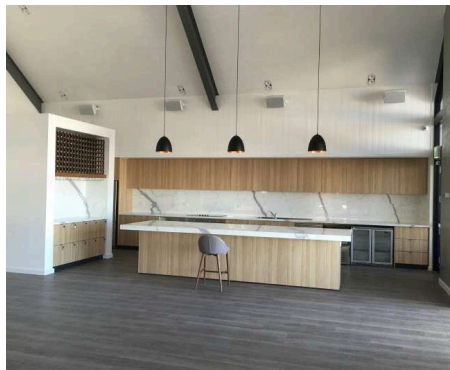




BLUE HQ FREMANTLE

NEW CLUBROOMS, WORKSHOP, CORPORATE ENTERTAINMENT &
BOAT STACKING FACILITIES

SECTOR	VALUE	CLIENT
Community	\$3M	Blue HQ
TYPE	COMPLETED	ARCHITECT
Construct only	2016	Coda



SWAN VALLEY ANGLICAN COMMUNITY SCHOOL

STAGE 7 - 2 NEW GPLA'S & SPORTS COURTS

SECTOR

Education

VALUE

\$2.8M

CLIENT

Anglican Schools Commission

TYPE

Construct only

COMPLETED

2016

ARCHITECT

DWA Architects



MIDLAND YOUTH HUB

NEW YOUTH CENTER FOR THE CITY OF SWAN

SECTOR

Community

VALUE

\$2.5M

CLIENT

City of Swan

TYPE

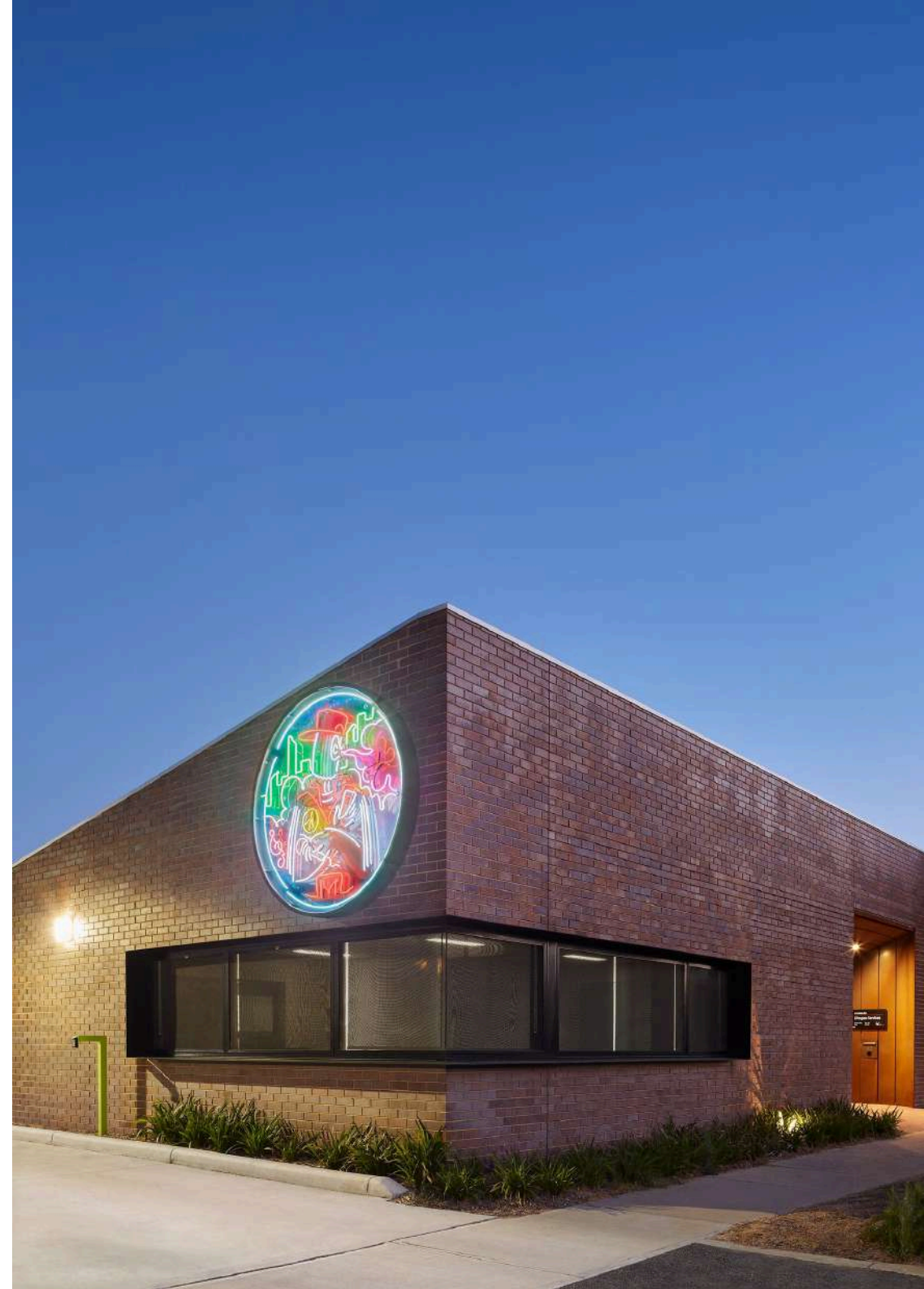
Construct only

COMPLETED

2016

ARCHITECT

Gresley Abas





ELLENBROOK SPORTS PAVILION

NEW SPORTS PAVILION WITH BAR, OFFICES, KITCHEN & CHANGING ROOMS

SECTOR

Community

VALUE

\$2.4M

CLIENT

City of Swan

TYPE

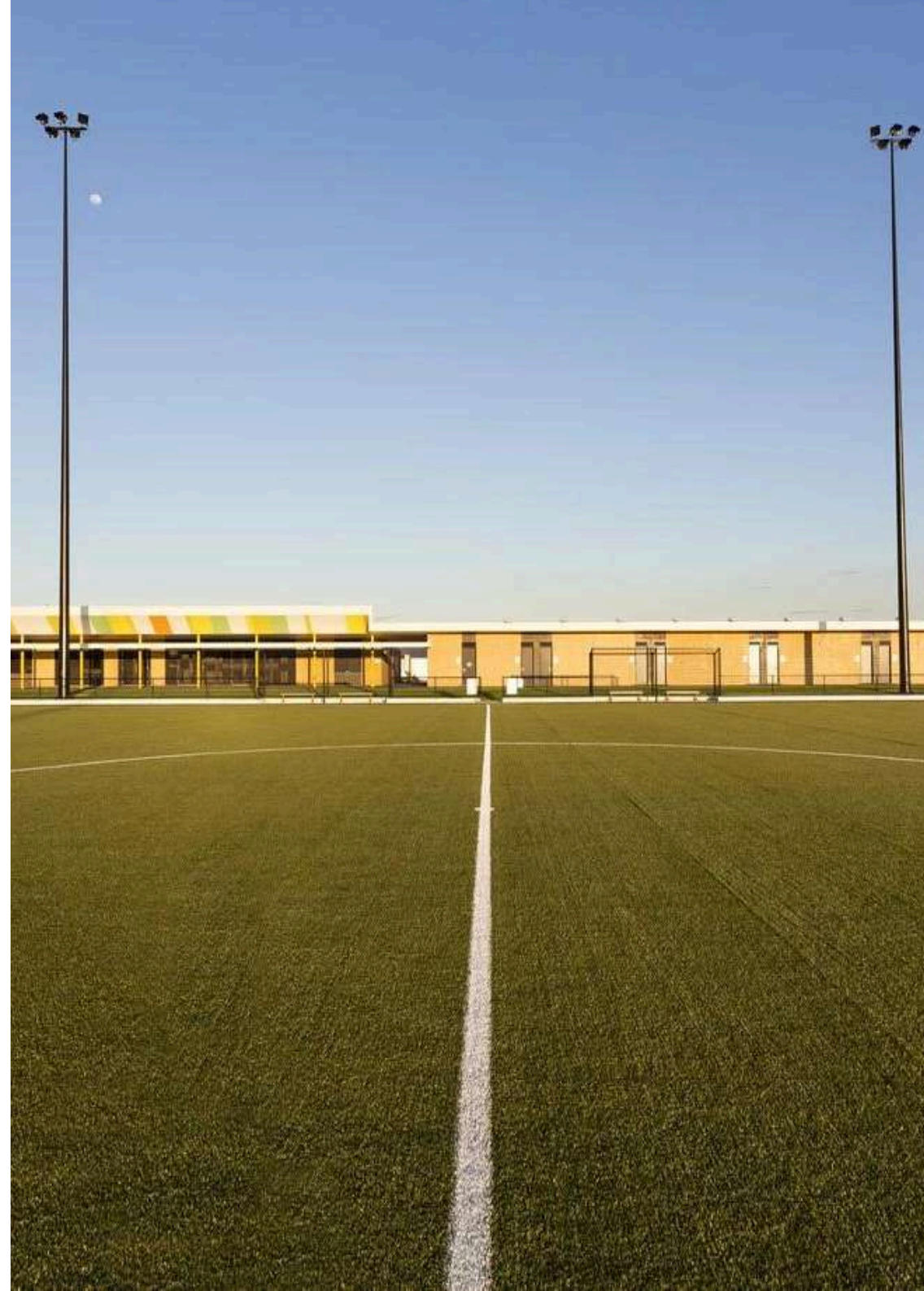
Construct only

COMPLETED

2016

ARCHITECT

Chindarsi Architects





MANDURAH CATHOLIC COLLEGE

STAGE 22 – TWO NEW CLASSROOMS, STAFF OFFICES, RECEPTION, RECOVERY ROOMS, AND LIBRARY RE-ROOFING & REFURBISHMENT

SECTOR

Education

VALUE

\$2.4M

CLIENT

CEWA

TYPE

Construct only

COMPLETED

2025

ARCHITECT

Paterson Architects



URSULA FRAYNE CATHOLIC COLLEGE

STAGE 11 - NEW PRE-PRIMARY BUILDING

SECTOR

Education

VALUE

\$2.3M

CLIENT

CEWA

TYPE

Construct only

COMPLETED

2015

ARCHITECT

DWA Architects



TRINITY RESIDENTIAL COLLEGE

REFURBISHMENT OF THE EXISTING COLLEGE DINING HALL & RE-ROOF

SECTOR

Education

VALUE

\$1M

CLIENT

Trinity Residential College

TYPE

Refurbishment & fitout

COMPLETED

2018

ARCHITECT

EIW



CORPUS CHRISTI COLLEGE

RECLADDING OF GYM AND PERFORMING ARTS THEATRE

SECTOR

Education

VALUE

\$0.7M

CLIENT

CEWA

TYPE

Refurbishment & fitout

COMPLETED

2025

ARCHITECT

EIW Architects



CURRENT & COMPLETED PROJECTS

CURRENT

Australian Islamic College Forrestdale (Stage 2) **\$31M**

WestWood Nedlands Apartments **\$16.2M**

Nouveau Nedlands Apartments **\$15.5M**

Monument East Townhouses **\$11M**

La Salle Catholic College Boarding House **\$10M**

Park Lane Townhouses **\$9.3M**

Sukha Scarborough Townhouses **\$6M**

18 Cooper Street Townhouses **\$5.4M**

20 Cooper Street Apartments **\$4.5M**

COMPLETED

Fountain College (Stage 3) **\$5.4M**

Mandurah Catholic College (Stage 22) **\$2.4M**

Corpus Christi College (Stage 21) **\$0.7M**

St Peters Early Learning Centre **\$4.3M**

St Kieran Catholic Primary School (Stage 8) **\$1.9M**

Australian Islamic College Forrestdale (Stage 1) **\$19M**

Majella Catholic Primary School (Stage 11) **\$2.5M**

Orana Catholic Primary School (Stage 16) **\$0.6M**

Mamarapha Aboriginal Training College **\$2M**

Majella Catholic Primary School (Stage 10) **\$0.7M**

St John Paul II Parish **\$5.5M**

Northshore Christian Grammar School **\$0.7M**

St Brigid's Catholic Primary School (Stage 8) **\$0.8M**

St Dominic's Catholic Primary School (Stage 9) **\$1.6M**

Our Lady of Lourdes Catholic Primary School (Stage 7) **\$1M**

Aranmore Catholic College **\$4.5M**

Holy Rosary School Doubleview **\$0.7M**





CURRENT & COMPLETED PROJECTS

St Joseph's Catholic Primary School Pinjarra \$0.5M

Infant Jesus Primary School \$0.3M

Notre Dame Catholic Primary School \$0.4M

Emmanuel Catholic College \$0.6M

Trinity Residential College, Dining Hall \$0.9M

St Clares Primary School \$0.2M

Brighton Catholic Primary School \$1.7M

Cockburn Community Men's Shed \$0.7M

Midland Youth Hub \$2.5M

Whitford Catholic Primary School (Stage 7) \$2M

Corpus Christi College (Stage 19A) \$0.2M

Swan Valley Anglican Community School \$2.8M

Xavier Catholic School (Stage 4) \$1.5M

Ursula Frayne Catholic College (Stage 11) \$2.3M

Aldi Store Waikiki \$2.2M

Ellenbrook Sports Pavilion \$2.4M

Blue HQ Fremantle \$3M

St James Anglican School \$7.2M

Whitford Catholic Primary School \$1.2M

Mel Maria Catholic Primary School \$3.1M

Prendiville Catholic College \$2.7M

St Vincent's Catholic Primary School \$3.8M

Telstra Exchange, Applecross \$0.2M

Aarons Hotel Perth \$2M

Centenary Pavilion \$1.5M

Waikiki Village Shopping Centre \$0.9M

ECU, Deans Office & WAAPA Extension \$5.5M

Atwell Primary School \$1.7M

Fremantle Education Centre \$0.6M

CK Retro Bar, 546 Hay Street \$1M

CURRENT & COMPLETED PROJECTS

ECU, Buildings 1, 3, 14, & 16 **\$1.5M**
Our Lady of Mount Carmel School **\$1.7M**
St Anthony's School **\$1M**
Rowethorpe, ILU's (Stage 3) **\$5.3M**
Brightwater Redcliffe **\$0.1M**
Irene McCormack Catholic College **\$5.9M**
Sussex Street Community Law Service **\$0.2M**
Rowethorpe, Terrace Dining **\$1.2M**
ECU Mt Lawley, Buildings 1-3 & 17 **\$1.2M**
Rowethorpe, Apartment Conversions **\$2.3M**
Southlands Food Court **\$1.5M**
Metso Minerals **\$0.2M**
St Andrew's Grammar School **\$0.5M**
Wellard Sports Pavilion **\$1.3M**
St David's Porte Cochere **\$0.05M**
Pfizer Smokers Shelter **\$0.1M**
WA Newspapers, Stripping Station **\$0.1M**
Rowethorpe, Independent Living **\$4.1M**
Craigville Gardens **\$0.2M**
Amart Waikiki **\$1.4M**
Rowethorpe, Cygnet Lodge **\$1.4M**
James Brown House **\$0.5M**
St Maria Goretti's Catholic School **\$0.8M**
Exmouth Power Station **\$2M**
Canning Vale Primary School **\$1.6M**
Willetton Youth Centre **\$0.3M**
Scotch College, Upper Primary **\$3.2M**
Curtin University **\$7M**
Landsdale Childcare Centre **\$0.7M**
JSR School, Admin Upgrade **\$0.2M**



TESTIMONIALS



Stephen Blake
PRINCIPAL, OUR LADY OF LOURDES CPS

Our school partnered with Metrocon to complete major capital development works in 2021. From our initial project meeting, it was clear that representatives from the company understood the complex nature of working within a school environment and assured myself, as Principal of the school, that their goal was to limit the impact to the school community as much as possible during the building process. I found Metrocon's site manager assigned to our project to be easy to communicate with and was always willing to hear any queries or concerns I had throughout the process. Our school was very pleased with the final outcome of our capital development project and would definitely recommend Metrocon for future building works in our school system or other organisations.

Dean Fehlberg
M C D F DIRECTOR, MCDF ARCHITECTS

Metrocon have been considered by MCDF Architects for school projects because of their reputation for quality construction and being able to cooperatively work with schools on tight integrated sites meeting timelines and budgets. We would recommend them as builders to clients for future appropriate projects and they are one of our preferred tenderers.

They were selected to competitively tender a classroom wing addition and highly detailed nature play facility situation in the heart of the St Brigid's School campus in Middle Swan. Upon winning the tender, they worked to immediately to establish a rapport with the school administration, staff, architect and sub-contractors, which was maintained throughout the project by their administration and construction team. The project was managed professionally and with a very high quality of workmanship. They met all time requirements and have been fair and reasonable when costing variations.



Darry Winsor
PRINCIPAL, NOTRE DAME CPS

In 2018 Metrocon Builders were contracted to complete renovations at Notre Dame Catholic Primary School. Their work was completed to a very high standard, they were easy to work with, ensuring minimal disruption to our school during the works period and they completed the works on budget within the agreed timeframe. Regular site meetings ensured that we were fully aware of the progress of our project and able to negotiate the minor adjustments that arose as the project progressed. Overall, a very positive experience with a great result which has enhanced the functionality of our school.

TESTIMONIALS



Paula Mackenzie
PRINCIPAL, ST BRIGID'S PRIMARY SCHOOL

We were delighted to work with Nick McRae and Metrocon when extending our Year One classrooms. Nick ensured that the project ran on time and the finishes were excellent. They worked to a schedule and delivered everything that was asked of them on time. Metrocon worked tirelessly around the clock to make sure it was completed on time. With so many workmen on site it was incredible that the school functioned not realising they were there. They were quiet and respectful of the school and students. It was a wonderful experience and I would recommend Metrocon and Nick to anyone. Building can be a troublesome time but with Nick and his company it was a breeze. I cannot recommend them enough, they were true professionals.



Sally Matthews
DIRECTOR, MATTHEWS & SCAVALLI ARCHITECTS

Matthews & Scavalli Architects have successfully worked with Metrocon on two Catholic education projects. These were learning area upgrades at St Kieran Primary School in Tuart Hill and staff room replanning & upgrade at Notre Dame Primary School in Cloverdale.

St Kieran Primary school project was the refurbishment of existing learning areas replanning to allow better flow of students and more access to natural light and ventilation into internal spaces. The staff of Metrocon worked with the school to manage a tricky building process on a busy school site. The working relationship with Metrocon was regarded as helpful, Metrocon worked with the school to minimise the impact of their works on daily school life.

Notre Dame Primary school project was to add small learning areas to the library and expand the small staff room area and upgrade to this space allowing for a functional space for the staff to regroup and re-energise in during an eventful school day. Metrocon were careful in their management of a building project in the heart of a functioning school, the resultant quality of the outcome was well appreciated by the school community.



Mark de Kluiver
PRINCIPAL, HOLY ROSARY CPS

Holy Rosary School in doubleview engaged the services of Metrocon to undertake building works ... Both projects were time sensitive, needing to be completed around the daily running of the school, relocating students to alternative spaces—including the staff room. The projects were also budget sensitive. In each case, the initial conversations, and suggestions from Metrocon as to how to achieve even better outcomes were most valuable. The works were completed in a timely manner, on budget, and to our satisfaction. Metrocon demonstrated their ability to engineer cost neutral solutions to unexpected issues arising from working within old buildings and succeeded in bringing these buildings back to life. Our school looks good and attracts favourable comment from existing and prospective families.

It says a lot that we secured the services of Metrocon for a second project. We have faith in the quality of their work and their tradespeople. Working with a solution focused building company was of major importance. Furthermore, Metrocon's induction process for their staff working on our site was detailed and thorough, and we did not have any issues. We are keen to undertake a third project in the near future. We would be happy to work again with Metrocon. They have been exceptional.

TESTIMONIALS



Eamon Broderick
DIRECTOR, TRCB

TRCB worked with Metrocon on two consecutive building contracts to undertake extensive renovations and additions to the Heritage-listed “Mann Building” at Aranmore Catholic College. These projects required careful coordination of trades and attention to detail as well as the capacity to adapt to suit building conditions uncovered during construction. The project was undertaken on an occupied secondary school site with works timed to suit the school calendar. The team at Metrocon were very proactive in resolving issues and achieved a high quality of construction and finish for this project. We have no hesitation in recommending Metrocon for work of a similar nature.



Mark Langdon
DIRECTOR, DWA ARCHITECTS

DWA Architects have successfully completed 5 projects with Metrocon over a 10 year period and are currently completing a 6th project in November 2022. All projects have been completed on time and have demonstrated a high level of construction competency. Metrocon have been responsive to the client delivery requirements and maintain a focus on delivering quality outcomes. The Metrocon team have a high level of professionalism and construction experience which is supported by a proactive approach with a good level of communication and planning.

Metrocon have offered flexible procurement models to suit various projects from; traditional tendering, to negotiated contracts and also design and construct. All have been executed in a professional and co-operative manner.

DWA Architects would have no hesitation in recommending Metrocon for future project delivery.

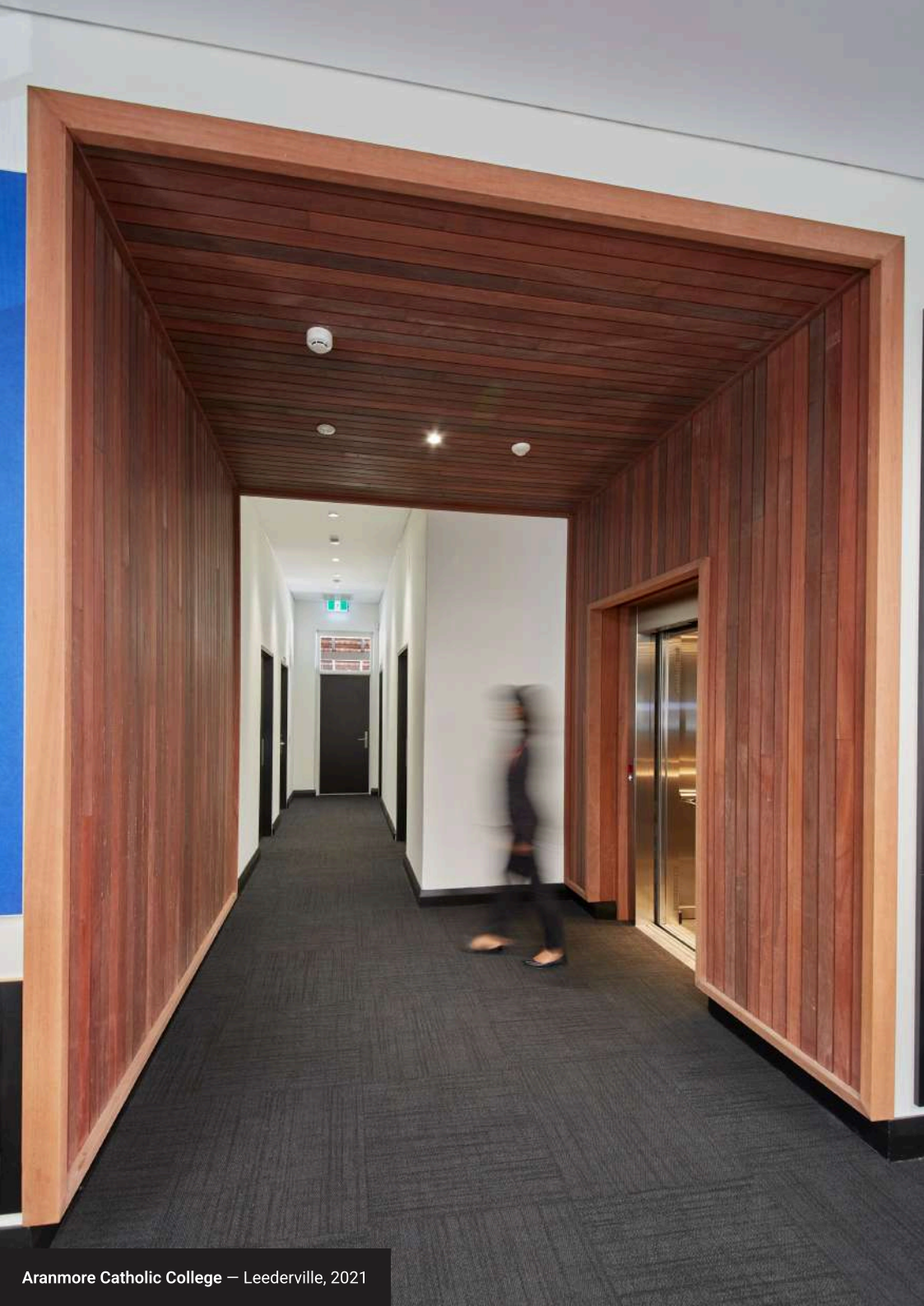


Suzie Richards
DEVELOPMENT CONSULTANT, CEWA

As a representative of CEWA I have worked with Metrocon on a number of building projects in recent years. I have found the Metrocon team to be friendly, helpful and hardworking, often putting in long hours and weekends to complete work to agreed timelines. The company is known for being solutions focused and cooperative to resolve issues which may arise during construction. I look forward to working with the team again.

OUR CLIENTS





COMPANY DETAILS

ADDRESS

192 Lord Street, Perth WA 6000, Australia

PHONE

+61 8 9328 7371

EMAIL

admin@metrocon.com.au

WEBSITE

metrocon.com.au

ABN

12 108 142 034

BUILDER'S REGISTRATION NO.

11887



192 Lord Street, Perth WA 6000, Australia

+61 8 9328 7371

admin@metrocon.com.au

METROCON.COM.AU

© Metrocon 2024